

# Educational Program for Students in South Korea



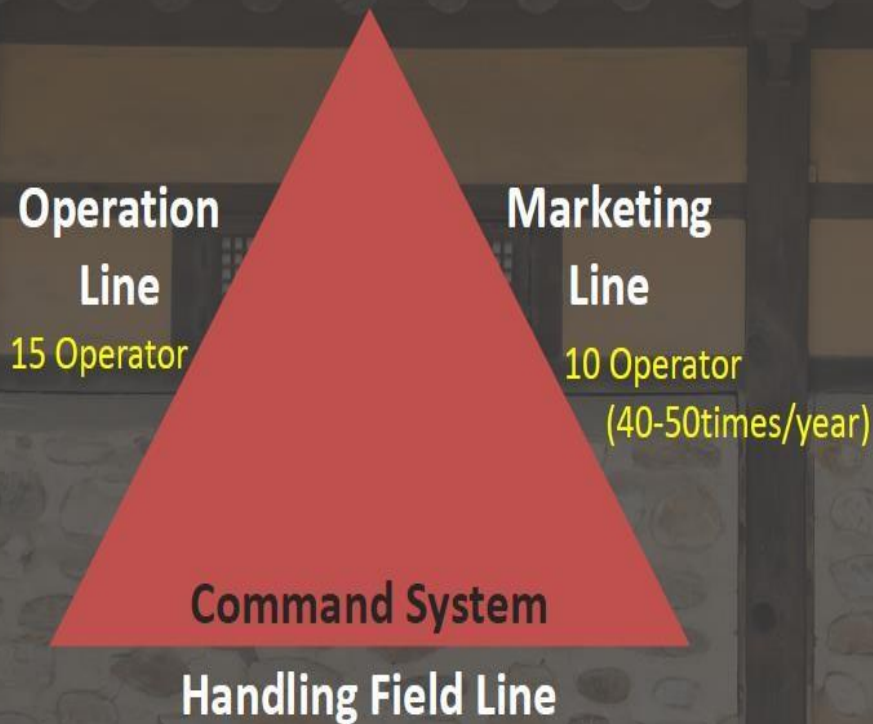
**Korea Reliable MICE Company**

# Company Overview

Foundation	16th January 2006
Capital	USD 350,000(Tourism) , USD 100,000(Medical Tourism)
Market	Southeast Asia, CIS, Middle East, Europe, America(Total 41 countries)
Main Business	Inbound Tour, Incentive Tour(MICE), Student Program, Medical Tour
Offices	Seoul(HQ), Busan, Jakarta, Abu-dhabi



# Company Organization



## Command Guide System

Advance Team

Inspection Team

Handling

### Guide Power

- English: 80~100
- Mandarin: 50~100
- Bahasa: 30
- Russian: 20
- Cantonese: 10
- Spanish: 6
- French: 8
- German: 5
- Italian: 5
- Arabic: 3
- Turkish: 4
- Iranian: 5
- Vietnamese: 10
- Thai: 10

# Business Area



International Conference

Corporate Incentive

National Event Operation

Conference Post Tour



Industrial Inspection Trip

Student Field Trip

Themed Travel

Inbound Trip



Body Check up

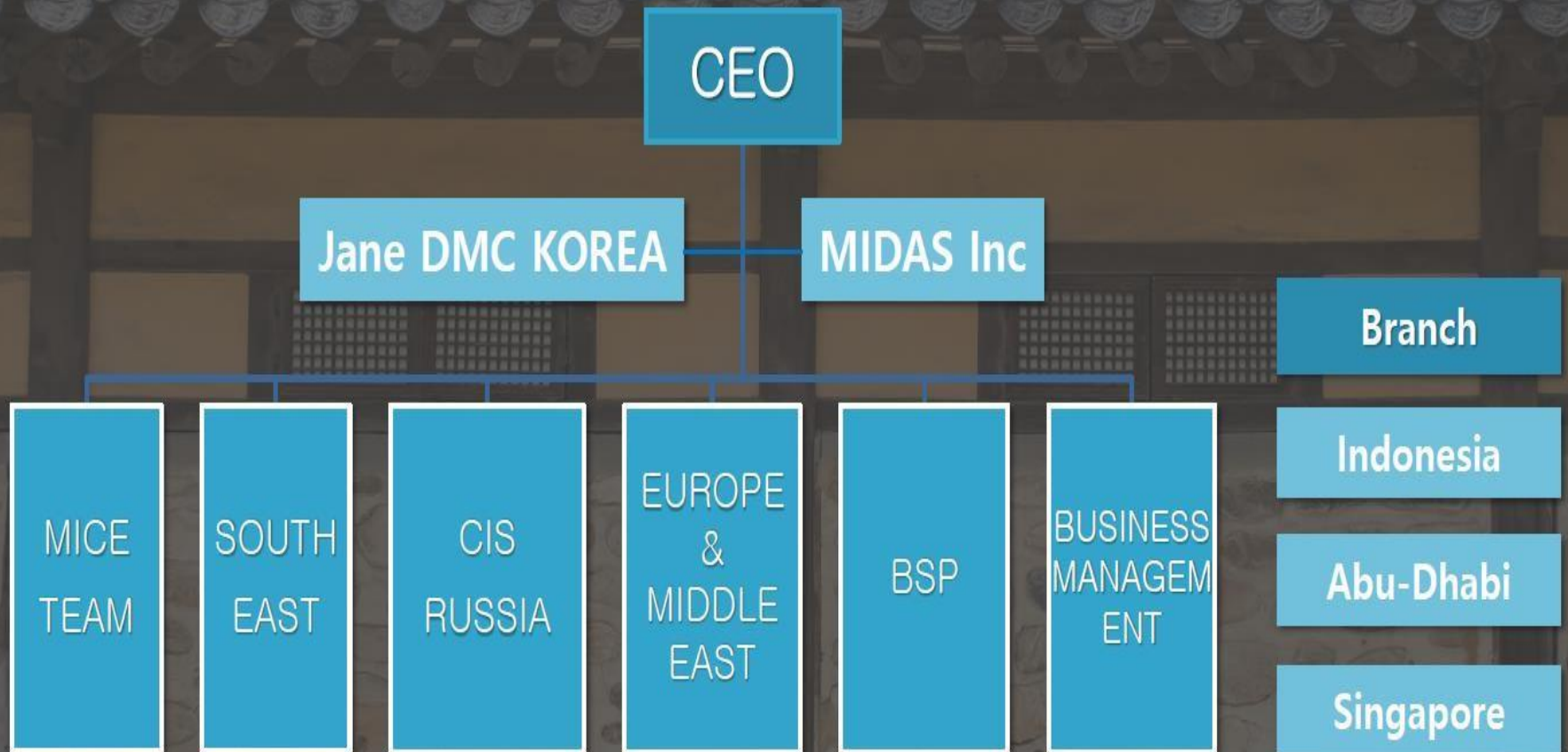
Plastic Surgery / Esthetic

Heavy Disease

International Conference



# Organization Chart



# About the Republic of Korea



**Country Name:** South Korea, officially  
"the Republic of Korea (ROK)"

**Location:** in East Asia, constituting the southern part of the Korean Peninsula and lying to the east of the Asian mainland.

**Population:** estimated 51.4 million

**Capital and largest city:** Seoul  
(with a population of around 10 million)



# About the Republic of Korea

Korea has **"FOUR"** distinct seasons



# KOREA STUDENT PROGRAM







## CONTENTS

- I. Educational Tour or Sightseeing
- II. Cultural Exchange Program
- III. Korea Wave Experience
- IV. Industrial & Official Visit
- V. Campus Tour
- VI. Indian & Vegetarian Restaurant
- VII. Sample Itinerary
- VIII. Korean Food

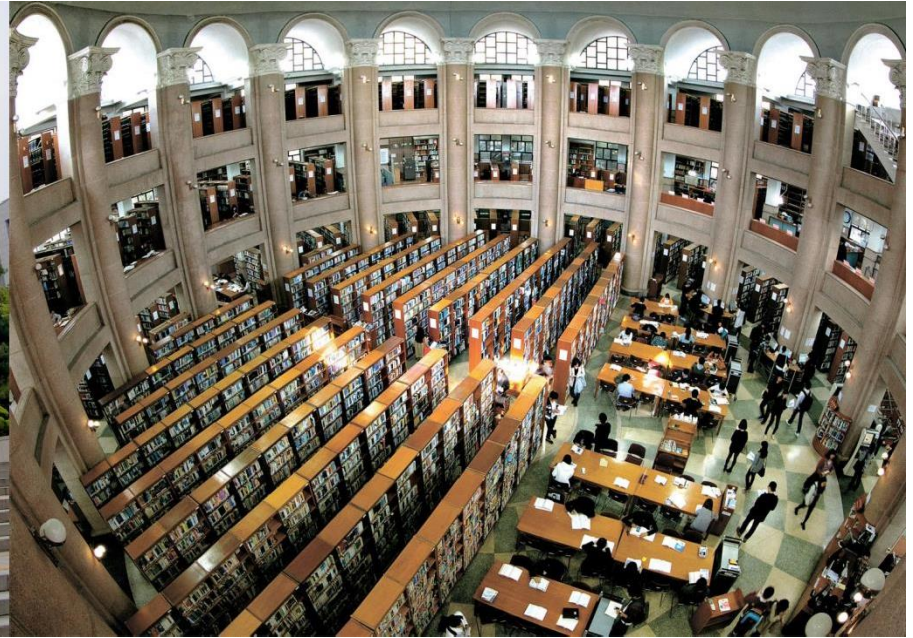
**Educational Tour or Sightseeing**

# **I . Educational & Sightseeing**





## Educational Tour – National Assembly Library



The Library was established in the midst of the scourge of war to “help carry out MP’s mission by establishing a single library room,” and it has been sharing the same way of developing parliamentary democracy. The Library collects resources for supporting legislative activities, and provides them not only to the MPs and the related officials but also to the public. It opens even on weeknights and weekends. **Over 160 million pages of vast resources are accessed through its digital library**, which people could easily access anytime, anywhere. The Library exists for the MPs and the whole nation. We have a perception that the value of the Library would disappear when it could no longer stand for the people. Each and every member of the Library, including myself, will put our best efforts for you, our customers.



## Educational Tour – SONGAM Stars Valley(Gyeonggi-do)



Songam Observatory, set against the gorgeous backdrop of nearby Jangheung Park, Yangju-si, Gyeonggi-do, is **one of the largest space themed parks in Korea**. Situated on Gyeongmyeongsan Mountain at around 440m above the sea level, the observatory (B1-3F) features a main **telescope that was locally developed and allows visitors to see the stars even during the day**. The observatory is part of Stars Valley, which consists of three different buildings: the Space Center, Star House, and Songam Observatory.

## Educational Tour – Seoul National Science Museum



**The Seoul National Science Museum first opened its doors to the public in 1945.** It was destroyed during the Korean War (1950-1953) and was later rebuilt at its current location in 1972. **The museum features a range of exhibition halls and hands-on programs offering visitors an opportunity to experience the principles of science.** In addition, the programs focus on nurturing the creativity of children and helping children better understand science.



## Educational Tour – DMZ Tour (Demilitarized Zone)



The Korean peninsula is home to a single nation of people with the same language and ethnicity, divided in two. The Demilitarized Zone (DMZ) is a buffer zone, which was established on July 27, 1953 when the Armistice Agreement was signed during the Korean War. The DMZ vividly captures the scars and wounds of the Korean War as well as the wishes and hopes for the future.

## Seoul Attractions – Gyeongbokgung Palace



### ◀ Gyeongbok Palace

First constructed in 1394 and reconstructed in 1867, the main and largest palace of the Five Grand Palaces built by the Joseon Dynasty, the palatial complex is divided into facilities for managing state affairs by the king and his administrators, the living quarters for the royal family, and recreational gardens. Visitors may take a glimpse into the refined and dignified elegance of the royal family, and visit Gyeonghoeru Pavilion, by far one of the most beautiful pavilions in the country and a highlight of the palace. The Changing of the Royal Guards Ceremony is held twice a day in front of Gwanghwamun-the main gate of the palace. Visitors can try on the costumes of the guards on a first come, first served basis. Two museums located within the palace compound-the National Palace Museum of Korea and the National Folk Museum of Korea-display the relics and treasures of the Joseon royal family and the traditional lifestyles of Koreans, respectively.

We have 5 Palaces in Seoul, Gyeongbok, Changdeok, Deoksu, Changgyeong, Gyeonghui.



## Seoul Attractions – The Blue House (Official & Resident)



◀ **Cheong Wa Dae** is the official residence of the President of the Republic of Korea.

The site of Cheongwadae was once home to a royal villa, a palace where queens-to-be were invited to stay during the royal wedding ceremonies of kings and crown princes during the Goryeo Dynasty (918-1392) as home to the back garden of Gyeongbokgung (Palace) where several pavilions were built during the Joseon Dynasty (1392-1910).

However, most of the buildings were demolished by the Japanese during the period of Japanese colonial rule (1910-1945) and the official residence of the Japanese Governor-General of Korea was built in their place. When the Republic of Korea was founded in the wake of the country's liberation, the country's first president, Syngman Rhee (1875-1965) named the compound "Gyeongmudae" and began to use it as a presidential office and residence. The name of the presidential compound was officially changed to Cheongwadae in December 1960 by the acting president at the time, President Yun Po-sun. Subsequently, the current main building and residence quarters were built in 1991 and Gyeongmudae was demolished in 1993. The main building consists of the president's office, a meeting room and other outbuildings.

Also known as the "Blue House" for its blue-tiled roof, Cheong Wa Dae is open to the general public, with tours operating four times per day. To participate in a tour, interested parties must apply online 3 weeks prior to the desired date of visit.



## Seoul Attractions – N Seoul Tower

(One of the most recognizable landmark, originally named Namsan Tower or Seoul tower.)



Seoul Tower opened to the public on October 15, 1980 and has since become a major tourist attraction. The 236.7 meter tower sits atop Namsan Mountain (243m).

The observatory offers panoramic views of Seoul and the surrounding areas.

Thirty years and countless visitors later, the structure was renamed 'N Seoul Tower.' The letter 'N' stands for the tower's 'new' look, which resulted from a 15 billion won remodeling project in December 2005. With a new lighting system and changes to the tower's overall color scheme, event coordinators can now decorate the tower for the season or events.



## Seoul Attractions – Bukchon Hanok Village

(To get a feel for what Seoul was like prior to its late 20<sup>th</sup> century modernization.)



Surrounded by Gyeongbokgung Palace, Changdeokgung Palace and Jongmyo Shrine, Bukchon Hanok Village is home to hundreds of traditional houses, called hanok, that date back to the Joseon Dynasty. The name Bukchon, which literally translates to "northern village," came about as the neighborhood lies north of two significant Seoul landmarks, Cheonggyecheon Stream and Jongno. Today, many of these hanoks operate as cultural centers, guesthouses, restaurants and tea houses, providing visitors with an opportunity to experience, learn and immerse in Korean traditional culture.



## Seoul Attractions – Gwanghwamun Square

(We have king Sejong founder of Hangeul Alphabet. 10Vowel, 14Consonant)



### ◀ Gwanghwamun Square

On August 1st, 2009, the redesigned Gwanghwamun Square opened to the public. With the inauguration of the square, Sejong-ro, located at the center of the 600-year-old historic city of Seoul, was transformed into a human-centered space that harmonizes with the beautiful scenery of Gyeongbokgung Palace and Bukaksan Mountain.

The close to 20,000m<sup>2</sup> Gwanghwamun Square is located at the center of Sejong-ro which connects Gwanghwamun Gate and Cheonggye Square. The square is divided into the sections, "Recovering the History of Gwanghwamun Gate Plaza," "Reenacting Yukjo Street Plaza," "Korea Main Plaza," "Civil Participation Urban Culture Plaza," "Downtown Plaza" and "Cheonggyecheon Stream Connector."

The statue of King Sejong is the square's focal point. In front of the statue, the main inventions from King Sejong's reign are on display, including the hangeul alphabet and scientific instruments such as a sundial, rain gauge and celestial globe. A nearby gallery tells "The Story of King Sejong," featuring a variety of materials and artifacts portraying the life and achievements of the great man himself. And there is also a statue of Admiral Yi Sunshin, a naval commander noted for his victories against the Japanese navy during the Japanese invasions of Korea (1592-1598) and a hero among Koreans.



## Seoul Attractions – Trick Eye Museum + Ice Museum





## Seoul Attractions – Myeongdong Street



Myeong-dong (명동) is one of the primary shopping districts in Seoul. The two main drags meet in the center of the block with one beginning from Myeong-dong Subway Station (Seoul Subway Line No. 4) and the other from Lotte Department Store at Euljiro. Many brand name shops and department stores line the streets and alleys. Common products for sale include clothes, shoes, and accessories. Unlike Namdaemun or Dongdaemun, many designer brands are sold in Myeong-dong. In addition, several major department stores include Lotte Department Store, Shinsegae Department Store, Myeong-dong Migliore, Noon Square and M Plaza. The department stores carry many premium labels and other fashionable goods at reasonable prices. Myeong-dong also has family restaurants, fast food, plus Korean, Western and Japanese dining options. Many restaurants in Myeong-dong specialize in pork cutlet (donkas) and kalguksu (thick noodles). Other businesses include hair salons, banks and theaters.

Rated the number one tourist destination by international visitors every year. Myeong-dong is home to Korea's Lotte and Sinsegae flagship department stores, as well as being a battlefield for SPA brands such as Zara and Uniqlo. Over 100 cosmetics and clothing stores can be found densely packed in each alley, selling imported clothing and the latest trends at low prices.



## Busan Attractions – Haedong Yonggungsa Temple (Jogyejong & Cheontaejong)



The temple is located on rocks that are facing the ocean. Scattered around the temple you will find many different statues, sculptures and a stone Pagoda. On the right-hand side, inside the cave, is a uniquely designed Buddhist sanctum, while situated just in front of the main sanctuary is a three-story Pagoda with 4 lions. The four lions are symbolizing joy, anger, sadness and happiness. Other special sites at the temple are the 108 stairs, stone lanterns lining the rock landscape. After going down the 108 stairs, one will be delighted with the beauty of the temple. Midway down the 108 steps, one can stop and enjoy the calming sounds of the waves while viewing the majestic sunrise. Due to this reason, many people visit this temple on New Year's day to pray for their families' well-being.



## Busan Attractions – Gamcheon Cultural Village “Colorful Village”



Gamcheon Cultural Village lead to the village’s Cultural center houses a wide alleys as shown below, formed by the cascade foothills area of London called to Machu Picchu, a theme that house projects and alleyways of tours throughout the formative work experience, recreated by local residents a place where you can enjoy the sights.



## Jeju Attractions – Yongduam Head Rock, Mysterious Road (Samdadoo-three many island(Rock, Windy, Woman))



### ◀ Yongduam Head Rock

Situated to the north of Jeju City, Yongduam was created by strong winds and waves over thousands of years. However, there are plenty of other stories of how it came to be. One legend has it that a dragon stealing precious jade from Mt. Halla was shot down by an arrow from the mountain deity. When he fell down on Yongduam, his body immediately sank into the ocean and his head rapidly froze looking at the sky. Another legend has it that a white horse, who dreamed of being a dragon and ascending to the sky, came to be caught by a soldier and froze into the rock.

### Mysterious Road

▶ The Jeju Mysterious Road, also known as Dokkaebi Road, lies on a hill at the foot of a mountain, and connects two major highways on Jeju Island. It has earned its name, as objects and liquid appear to roll and flow up the hill instead of down, when, in fact, such image of gravity defiance is an optical illusion rendered by the seemingly high surroundings.





# Jeju Attractions – Seongsan Sunrise Peak, Seongup Folk Village

(One of Korea's most beautiful sunrise sights, resisted by Unesco in 2007)



## ◀ Seongsan Sunrise Peak

Seongsan Ilchulbong Peak rose from under the sea in a volcanic eruption over 100,000 years ago. Located on the eastern end of Jeju Island, there is a huge crater at the top of Seongsan Ilchulbong Peak. The crater is about 600m in diameter and 90m high. With the 99 sharp rocks surrounding the crater, it looks like a gigantic crown. While the southeast and north sides are cliffs, the northwest side is a verdant grassy hill that is connected to the Seongsan Village. The ridge provides an ideal spot for walks and for horse riding as well.

The sunrise from the crater is magnificent. Also the Seongsan Ilchulbong Peak surrounded by bright yellow colored rapeseed flowers in the spring is truly a sight to behold.

## Seongup Folk Village

- ▶ The Seongeup Folk Village shows the unique culture of Jeju Island: the black lava rock walls, the straight but curvy alleys to block the wind, and the stone grandfather statues (Harubang), which have become a prime feature of the landscape. The local black-haired pigs and tonggi (pigsty / restroom) are especially well-known characteristics of Jeju folk culture. The Jeju black pork is said to be very nutritious.





## Jeju Attractions – Chenjiyeon Waterfall



The water at Cheonjiyeon Falls, meaning "sky connected with land," appears to fall from the heavens, giving the falls its name. Apart from the wild Dampalsu trees, designated as Natural Monument No. 163, the wooded area also contains a great variety of rare plants such as brambles, Songyeopnan as well as Gusiljappam trees, Sanyuja trees (Chinese lemon trees), and camellias which all make up a forest specified as Natural Monument No. 379. Take a walk along the subtropical path towards the Cheonjiyeon Falls for a kilometer and you will be able to hear the magnificent sound of the water falling. The waterfall is 22m high, 12m wide and 20m in depth. The clear and deep water of Cheonjiyeon Falls is designated as Natural Monument No. 27 and is renowned as a habitat for Mutae eels (Natural Monument No. 258).



## Jeju Attractions – Jeju Olle Trail



Jeju Olle Trail is for any walking traveler. We had a firm belief that this beautiful is land of Jeju needed a trail dedicated to those who walk and a trail long enough to cater to those who wish to walk as much as they want. We connected broken trails, found long lost trails and recalled vanished trails to complete Jeju Olle circuit. If traveling by car is like a journey of distanced points, Jeju Olle Trail is an intimate journey that weaves together each point. You will encounter the true Jeju and finer details by hiking the trail, that would otherwise be missed in a car. We invite you to enjoy the Jeju Olle Trail in all seasons and to find peace and love as you slowly drink in the wonder of our island home.



## Jeju Attractions – Jeju Hainyeo(women divers)



In Jeju Island, there is a community of women, some aged in their 80s, which goes diving 10m under the sea to gather shellfish, such as abalone or sea urchins for a living without the help of oxygen masks. With knowledge of the sea and marine life, the Jeju haenyeo (female divers) harvest for up to seven hours a day, 90 days of the year holding their breath for just one minute for every dive and making a unique verbal sound when resurfacing. Divers are categorised into three groups according to level of experience: hagun, junggun and sanggun with the sanggun offering guidance to the others. Before a dive, prayers are said to the Jamsugut, goddess of the sea, to ask for safety and an abundant catch. Knowledge is passed down to younger generations in families, schools, local fishery cooperatives which have the area's fishing rights, haenyeo associations, The Haenyeo School and Haenyeo Museum. Designated by the provincial government as representing the island's character and people's spirit, the culture of Jeju haenyeo has also contributed to the advancement of women's status in the community and promoted environmental sustainability with its eco-friendly methods and community involvement in management of fishing practices.



# Jeju Attractions – Hello Kitty Museum, Teddy Bear Museum



## ◀ Teddy Bear Museum

The Teddy Bear was named for American's 26th president, Theodore Roosevelt, whose nickname was Teddy. The story goes that President Roosevelt had been bear hunting. At the end of his trip, he had not shot a single bear. One of staff members caught a bear cub and lashed it to a tree for President Roosevelt to shoot. He refused. President Roosevelt felt it was inappropriate behavior for a sportsman such as himself. This story spread rapidly, people soon started to make their own Teddy Bears. Morris Michtom, an American and Margarete Steiff, a German, were the first manufactures to produce teddy bears commercially. The Steiff Co. was the most successful of the two toy companies. You can see many of Steiff's traditional bears in the Jeju Teddy Bear Museum.

## ▶ Hello Kitty Museum

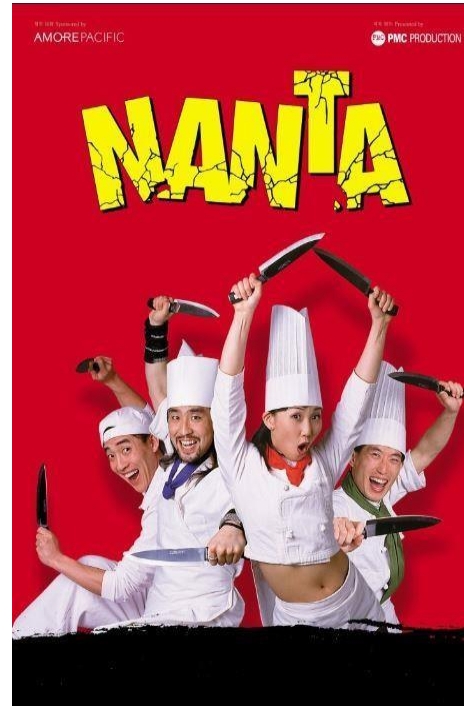
Hello Kitty Island is a special exhibition hall, themed around Hello Kitty, beloved by many people all over the world. Visitors can enjoy the many various exhibits, comprised of a gift shop, Kitty History Hall, Art Education Hall, Music Education Hall, Art Gallery, World Gallery Hall, Trip around the World Gallery Hall, Constellation Education Hall, Planned Gallery, Hello Kitty Café, 3D Theater, Outdoor Modeling Gallery, and more. At Hello Kitty Café, hot coffee is served along with sweet deserts.



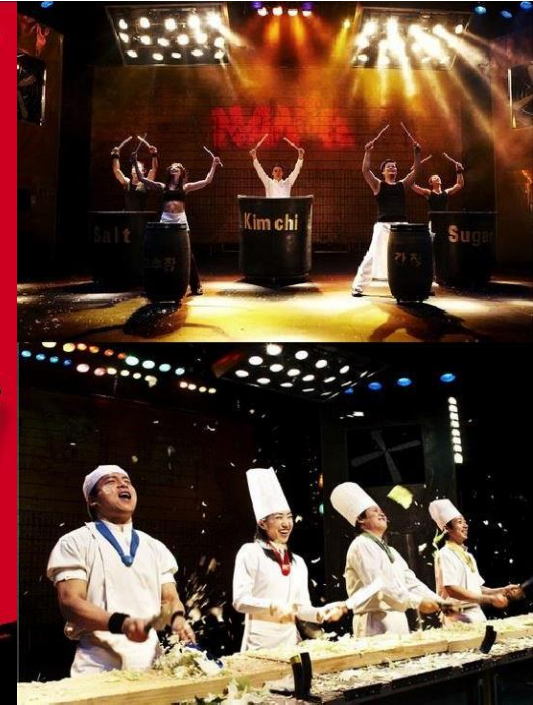
## Performance Option – “Bibap” Or “Nanta”



BIBAP is a nonverbal performance based on the Korean representative dish, bibimbap (rice mixed with vegetables and beef). As a nonverbal performance, the actors mimic the sound of making bibimbap with beat-boxing and a cappella, demonstration of motions through b-boying, and acrobatics and martial arts. Since its debut in 2009, Bibap has been staged and well-received at food conferences as well as global venues like the 2010 Edinburgh Festival Fringe. Today, it is heralded as the pioneer of a new culture code, Eatertainment, the combination of eating and entertainment. Get a taste of this innovative and dynamic performance at Cine Core now!



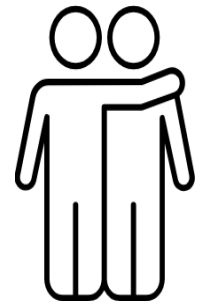
NANTA is a top non-verbal cooking performance featuring traditional rhythms of samulnori (traditional percussion quartet). The performance constantly lives up to its popularity with a record of 11 million visitors since its debut in October 1997. Through the use of various kitchen utensils such as knives, pots and pans, the performance concludes with an ending so dynamic that audiences may feel their stresses been relieved. Currently, NANTA is holding performances at Myeongdong, Chungjeongno, Hongdae and Jeju theaters.





**Cultural Exchange**

## **II . Cultural Exchange Program**



# Exchange Student Program

## SCHEDULE

1. Welcome and Greetings

2. Performance

3. Intimacy and  
Fraternization through  
group play activities

4. Free conversation and  
gift exchange for  
each team

## Certificate





## Exchange Student Program – Cultural Exchange (Malaysia SMK Bukit Jelutong School)





## Exchange Student Program – Cultural Exchange (Malaysia SMK Bukit Jelutong School)





## Exchange Student Program – Cultural Exchange (Oman in UAE)





# Malaysia S.M.K SRI AMAN





# Exchange Student Program – Cultural Exchange Performance (China YangGuang Art School)





# China YangGuang Art School



阳光培训学校



# Oman World Youth Club Association





# Oman Sultan Qaboos University



Sultan Qaboos University





# Dubai Al Ittihad School Visit



U.A.E. KHALIFA University



**KHALIFA**  
UNIVERSITY





**Korea Wave Experience**

## **III. Experience Korean Wave**



## Experience Tour – Making Korean Food Kimchi & Wearing Hanbok



Visitors can learn Korean history and culture through Korean traditional food!  
It offers kimchi-making & Kimbap-making classes guided by a professional instructor.  
Participants can taste the food they make. They can try Korean traditional costume Hanbok as well.



## Experience Tour – Learning K-pop Dance



# Experience Tour – Learning K-Beauty





## Experience Tour – Film Shooting Place "Descendants of the Sun"



Camp Greaves is the returned place as of August 2007 after US Army Force withdrawal in 1997. It was a camp base for the 506th US Second Infantry Division for about 50 years after the ceasefire agreement of Korean War. An accommodation for officers, living hall, physical activity hall and several other army facilities remained intact, and are considered to be the 'Modern Cultural Heritage' cultural assets.

## Experience Tour – KBS Center (Drama Studio – Drama gallery, Outdoor shooting place )



The KBS Suwon Studio is an outstanding film studio that produces HD digital TV dramas. It is comprised of an open set, drama production center, special set, and various facilities. Intended to be used semi-permanently, the studio boasts realistic buildings. A variety of dramas filmed there include historical dramas such as Empress Myeongseong and Dongyang Geukjang; the studio is also a popular site for producing movies, commercials, and music videos.



## Experience Tour – Learning Ski & Enjoy Sledding





## Experience Tour – Picking Tangerine





## Experience Tour – Picking Persimmon & Pear





## Experience Tour – Picking Strawberry





## Experience Tour – Everland Theme Park



Everland Resort entertains visitors all year long with various rides, festivals like Global Fair, theme parks including Magic Land, European Adventure and Zootopia, perfect for a great amusement park. It houses diverse attractions which are available to enjoy regardless of ages, different themed festivals including Tulip Festival, Rose Festival, Summer Splash, Halloween Festival, Romantic Illumination, and other festivals all year long. One of the park's most famous rides is T-Express, Korea's first wooden roller coaster, popular among young visitors. Zootopia is must-see as it spans over an area of 15,000m<sup>2</sup> and exhibits 2,000 animals of 201 species. Lost Valley opened in 2013 and features the largest ecological safari world and offers a tour by amphibious car to see 150 animals of 20 species. A pair of giant pandas given from Chinese president Xi Jinping as a symbol of friendship between Korea and China, will be shown to people for the first time to celebrate the 40th anniversary of Everland in 2016.



## Experience Tour – Cooking Korea Shabu Shabu



Shabu Shabu Set For Vegetarian

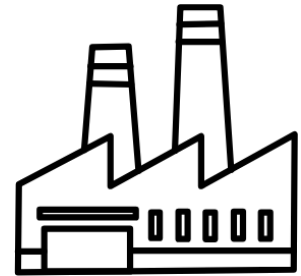


# Experience Tour – Korean Street Food Festival



**Industrial & Office Visit**

## **IV. Industrial & Office Visit**





## Industrial & Office Visit – Nongshim Factory(GUMI)



Nongshim, started up businesses in 1965 over 50 years. Nongshim's Philosophy (in pursuit of coexistence and happiness with willingness to share with neighbors) and Do Yeon Spirit (referring to ceaseless innovation and frontier spirits to open a better world). Having risen as a global food company that pursues customers health and happiness based on Nongshim's Philosophy, we inaugurated Nongshim SSC (Social Service Corps) in March, 2007. Visitors can see Korea Ramen Manufacturing Processing.

## Industrial & Office Visit – Samsung Innovation Museum & Samsung Delight



Samsung Innovation Museum exhibits the history and the future of such innovations brought by the electronics industry. That is also why it is named **Innovation Museum**. Our lives have improved as great inventors and numerous electronics companies continued to introduce new technologies and products to the world through endless research and innovation. The invention of the radio and TV led to the development of mass media, and the communication and computing technologies revolutionized the generation, distribution and consumption of information. Like this, the electronics industry provides the foundation for the development of our civilization, and its history is a record of our challenge and desire for new value.



## Industrial & Office Visit – Hyundai Motors & Hyundai Heavy Industry(Ship Building)



Hyundai Heavy Industries started its shipbuilding industry in 1972 and developed into one of the greatest shipbuilding companies in the world. With its growing technology, Hyundai Heavy Industries contributes in national economic growth and has become as one of world's greatest complex corporations by advancing in numerous industries such as marine, plant, machine, electrical machinery and appliance, and construction equipment business.

## Industrial & Office Visit – KIA Motors Sohari Plant



Kia Motors Corporation (KMC) was founded in 1944, is South Korea's oldest manufacturer of motor vehicles and is now a subsidiary of the Hyundai-Kia Automotive Group. Over 1.5 million vehicles a year are produced in 13 manufacturing and assembly operations in eight countries which are then sold and serviced through a network of distributors and dealers covering 172 countries. Kia today has 33,255 full-time employees worldwide and annual revenues of over US\$14.6 billion. It is the major sponsor of the Australian Open and an official automotive partner of [FIFA](#) – the governing body of the FIFA World Cup.



## Industrial & Office Visit – GORI Nuclear Power Plant

(6<sup>th</sup> largest of all nuclear power supplier in the world)



The Korea Hydro & Nuclear Power Co., Ltd. is operating 21 nuclear power plants commercially at present and its total generation capacity is 18,716 MW of electricity. It is the 6th largest of all nuclear power suppliers in the world. It owns 17 Pressurized Water Reactors and 4 Pressurized Heavy Water Reactors.

## Industrial & Office Visit – SOYANG Dam



Built in October 1973, Soyang Dam is **Asia's largest and the world's fourth largest rock-fill dam**. It stands 123m high and 530m long, and can generate 200,000kW/h of electricity. It serves multiple purposes including flood control, hydroelectric power generation, irrigation, and fishing. It holds 29 million tons of water, which has become Soyangho Lake, Korea's largest man-made lake. Spanning a large area that borders the **Gangwon-do** cities and districts of Chuncheon, Hongcheon, Yanggu and Inje, the lake is often referred to as an "inland sea". Passenger ferries bound for Yanggu and Inje run along the 60km-long water route that leads to Seoraksan Mountain.



## Industrial & Office Visit – GIMPO & NANJI Landfill



**Campus Tour**



# **V . Visit to University in Korea**



## Campus Tour – KAIST(*Korea Advanced Institute of Science and Technology*)



### Evaluation

- ❖ 2016 Best Innovation University  
Rank Top 6 in the World
- ❖ 2016 Asia Best Innovation  
University Rank Top 1
- ❖ QS World University Rankings Total  
Top 46

KAIST was established in 1971 to model a research focused university and to foster elite human resources in science and technology needed by the nation.

## Campus Tour – Seoul National University



### Evaluation

- ❖ 2016 The World University Asia Rankings Top 9
- ❖ QS World University Rankings Total Top 35

Founded in 1946, Seoul National University is the most reputable university in Korea based on its long academic history and tradition. It is the first national university in Korea that was established by merging several institutions of higher education around the Seoul area including Kyongsong University. It has two campuses in Seoul: the main campus is in Daehak-dong, Gwanak-gu and the medical campus is in Yeongeong-dong, Jongno-gu. The university comprises 16 colleges and associated graduates schools, and 9 professional schools.



# Campus Tour – Ewha Woman's University



Ewha was founded by a Methodist missionary called Mary F. Scranton in 1886.

Mrs. Scranton's first-year class consisted of a single student.

But while polite society mocked the idea of trying to teach females anything other than the art of serving husband and son, King Kojong gave the enterprise his blessing.

It was King Kojong who gave the school its name in 1887, and "Ewha" means "Pear Blossoms."

The original campus was covered with them, and many historians speculate that a grove of pear trees near the Scranton home inspired the name.

The image of the pear blossom is incorporated in the school's logo.

To the early Ewha students who lived and studied in the Scranton home, the pear blossoms must have been a distinctive and memorable feature of their educational experience.

## Campus Tour – Visit to Korea High School



Jungang High School is located in Jong-ro near Samcheongdong-gil. It was built to educate the public at the beginning of the 20th century. The school's main building was reconstructed in 1937 after the original two-story brick house was destroyed in 1934. The main building situated in front of the main gate is a two-story H-shaped granite stone building in Gothic style, with a four-story tower in the middle.



**Indian & Vegetarian Restaurant**



# **VI. Indian & Vegetarian Restaurant in Korea**

# Indian & Vegetarian Restaurant –in Seoul

## 1. Foreign Restaurant



Menu: chicken curry, lamb curry, vegetable curry, nan breads, vegetable spring rolls, chicken tikka, stir-fried noodles, tandoori chicken, French fry, samosa, fried rice, salad, sweet corn soup, fruits, some sweet desserts.

Vegetarian : Salad, corn Soup, Vege Pakora, Vegetable Spring roll, Fried potato, Dal Fry, Chana Masala, Vegetable rice, white rice, Naan, bread, Sweet desserts, Fruits.

## 2. KERVAN RESTAURANT

Kervan is a restaurant specializing in Turkish cuisine, which is widely enjoyed around the world.

- Max Capacity : 100 seats





## Indian & Vegetarian Restaurant –in Seoul

### 3. Bombay Grill : Indian Restaurant



## Indian & Vegetarian Restaurant –in Seoul



### 4. TAJ PALACE RESTAURANT

Traditional Indian restaurant where provides curry, tandoori chicken and kebob.

- Max Capacity : 50 seats





# Indian & Vegetarian Restaurant –in Busan

## 1. Rama & Bavana



**\*Restaurant :** Rama & Bavana

**\*Capacity :** 38 seats

**\*Location :** 22, Jungang-daero 680beon-gil, Busanjin-gu, Busan, Republic of Korea

**\*Alcohol :** O





# Indian & Vegetarian Restaurant –in Busan

## 2. Bombay Brau



**\*Restaurant :** Bombay Brau

**\*Capacity :** 46 seats

**\*Location :** 40, Munhyeongeumyung-ro, Nam-gu, Busan,  
Republic of Korea

**\*Alcohol :** O





# Indian & Vegetarian Restaurant –in Busan

## 3.New Little India



\***Restaurant** : New Little India

\***Capacity** : 52-60 seats

\***Location** : 205, Jungang-daero, Dong-gu,  
Busan, Republic of Korea

\***Alcohol** : O

**Schedule for Student**

## **VII. Sample Itinerary**



# Sample Itinerary

DAY1

DUBAI



DXB→ICN

INCHEON airport



ICN→SEOUL

SEOUL



DAY2

UAE Embassy

Samsung D'light

Lotte World

Nanta

SEOUL

DAY3

SEOUL→DAEJEON



Satrec I



KAIST

DAEJEON→BUSAN (by KTX)



BUSAN



DAY4

Kori Nuclear Energy Foundation

Busan City Tour

BUSAN



DAY5

Hyundai Automobile Factory in Ulsan

Hyundai Heavy Industries

BUSAN

# Sample Itinerary

**DAY6**



**BUSAN→JEJU**  
(by domestic airline)

Jeju



Jeju National University



Jeju Aerospace Museum



Spirited Garden

JEJU

**DAY7**



NEXON Computer Museum



Sungsan Sunrise Crator



Seongeup Folk Village



Trick Art Museum

JEJU

**DAY8**



**JEJU→SEOUL**  
(by domestic airline)

Seoul



Experience Martial Arts  
Tae Kwon Do



SEOUL

**DAY9**



SAMSUNG SDS(Suwon)



K-pop Hologram Concert



Dongdaemun Market

SEOUL

**DAY10**



National Central Museum



Seoul Tower



Namdaemun Market, Insadong



INCHEON



Korean Food

**VIII** Korean Food



# Korean Food

## Bulgogi



## Galbi (Beef Rib BBQ)



## Samgyetang (Ginseng Chicken Soup)





# Korean Food

## Bibimbap



## Haemul Pajeon (Seafood Pancake)



## Grilled Fish





# Korean Food

## Seafood Hot Pot



## Hanjeongsik





# **10 THINGS SOUTH KOREA DOES BETTER THAN ANYWHERE ELSE (CNN)**

- 1) Innovative cosmetics
- 2) Plastic surgery
- 3) Wired culture (Internet kingdom)
- 4) Whipping out the plastic (Credit Card)
- 5) Workaholics (44.6hours per week)
- 6) Blind dates
- 7) Flight attendants(Crew)
- 8) Female golfers (Ladies Professional Golf Association)
- 9) Starcraft(Online Game)
- 10) Membership Training(Heavy Drinking)

# THANK YOU



Contact : **JANE DMC KOREA MICE TEAM**

[agatha@janetour.com](mailto:agatha@janetour.com) / [china@janetour.com](mailto:china@janetour.com)  
[judykim@janetour.com](mailto:judykim@janetour.com)

Facebook : JaneTourDMC

Instagram : janetour\_dmc